



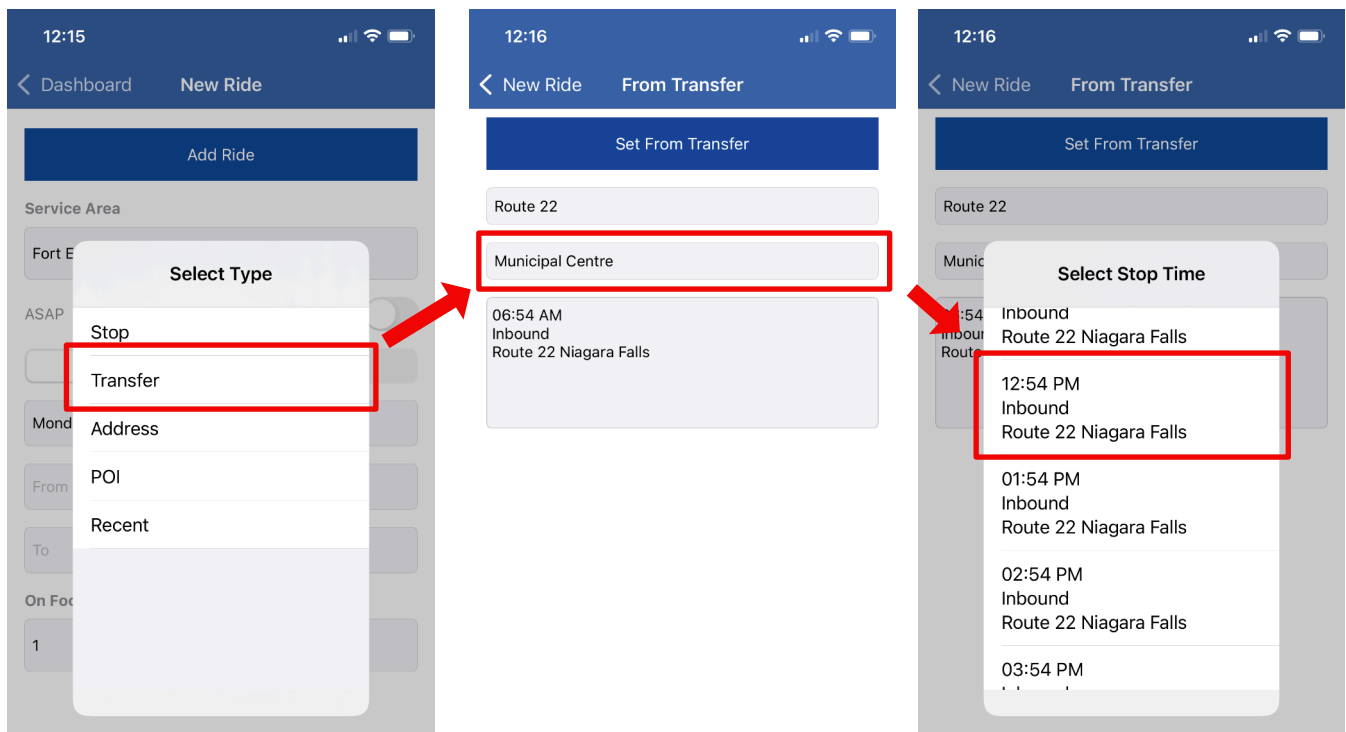
## FORT ERIE TRANSIT

Using On-Demand Transit to **transfer** to or from Niagara Region Transit **Route 22?**

Schedule a **transfer trip** so that an On-Demand Transit vehicle picks you up or drops you off right as the Niagara Region bus is departing or arriving.

### How to Request a Transfer Trip

1. When requesting your trip, choose the **“Transfer”** option.  
If you're transferring from Route 22, select the **“From”** option. If you're transferring to Route 22, use the **“To”** option.
2. After selecting the **Municipal Centre**, the app will show which **times** that Route 22 stops there.
3. **Select** a time and **complete** your request.



On-Demand Transit will ensure a vehicle drops you off **right before** the regional line arrives, or is there to **pick you up** if you are arriving from Niagara Falls.

Visit [fetransit.ca](http://fetransit.ca) to learn more about the service, or visit [ondemand.pantonium.com](http://ondemand.pantonium.com) to learn more about how to use the app.



Don't have the app? Download it today or call **1-833-287-5463** for assistance.